

Important: Do not connect the flight instrument to the computer until you have finished Step 1 and 2 of this software installation guide!

This installation guide is for FlyChart v4.52.32 and later and will run in the following operating systems: Windows 98 (Including SR2), Windows Millennium Me, Windows 2000 *, Windows XP Home* / Professional*, Windows Vista*

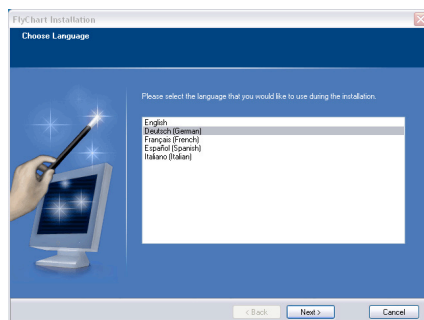
*Installation under these operating systems requires administrator rights. If you are unsure which rights you actually have, please ask your system administrator or a PC service provider.

Step 1 Obtain FlyChart software

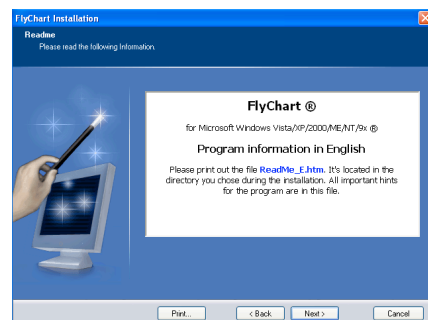
The latest FlyChart can be downloaded at www.flytec.com/Products/Software/FlyChart_452.htm. When you click on the download link save FlyChart to a specified location for use in the next step.

Step 2 Install FlyChart

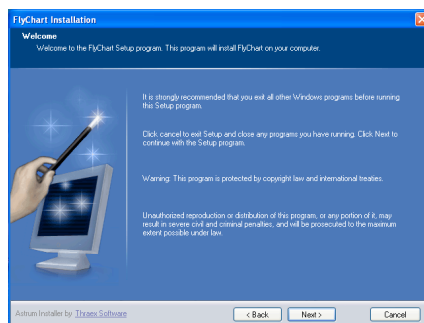
1. Verify that no flight instrument and no USB serial adapter is connected to the PC.
2. Go to the folder you downloaded the FlyChart installer to in step 1 (or in the case of a CD installation open the FlyChart folder on the CD) and double click **Flychart452_xx.exe**, the FlyChart installer will start.



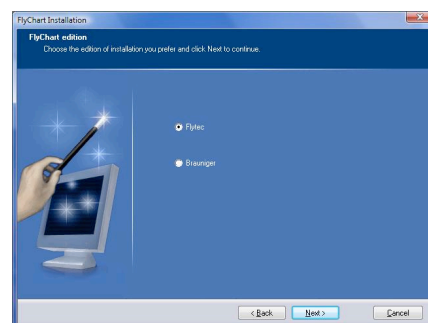
3. Select language and click **Next**



5. Read information and click **Next**

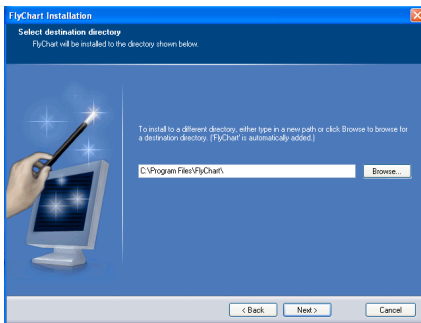


4. Read information and click **Next**

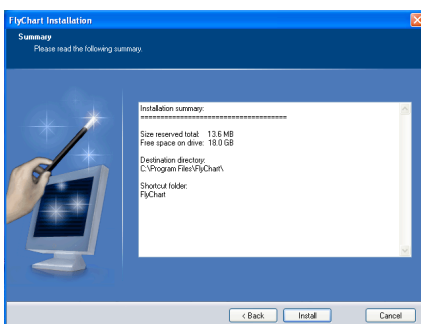


6. Select instrument mfg. and click **Next**

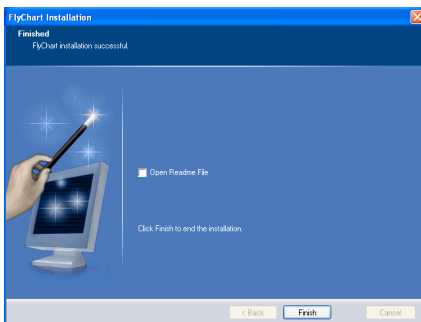
FlyChart Installation Guide



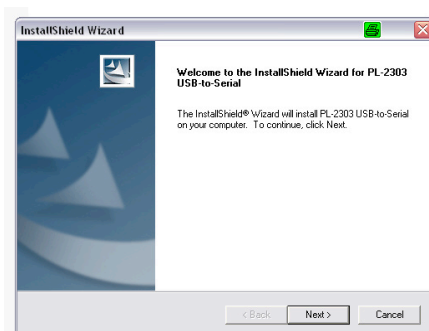
7. Choose destination directory & click **Next**. If possible, use the proposed default settings.



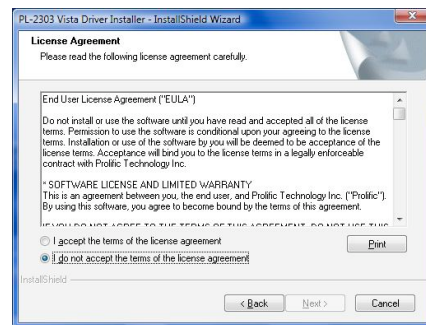
8. Verify info is correct and click **Install**



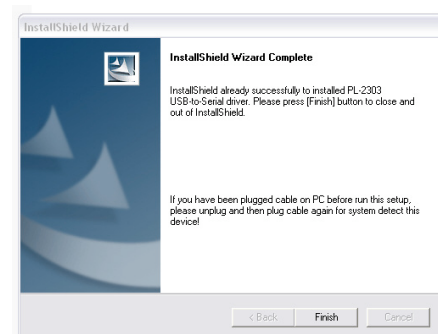
9. If this installation is an upgrade or your system already contains the necessary USB driver this screen will confirm the installation was successful. Click **Finish**. Otherwise continue to next step.



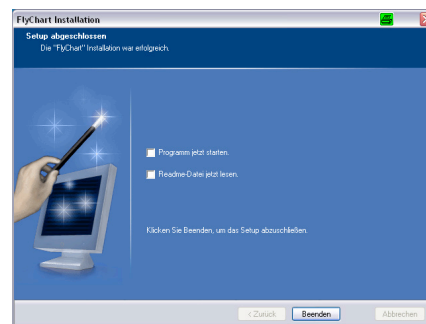
10. Click on **Next**



11. Read, select "I accept..." and click **Next**



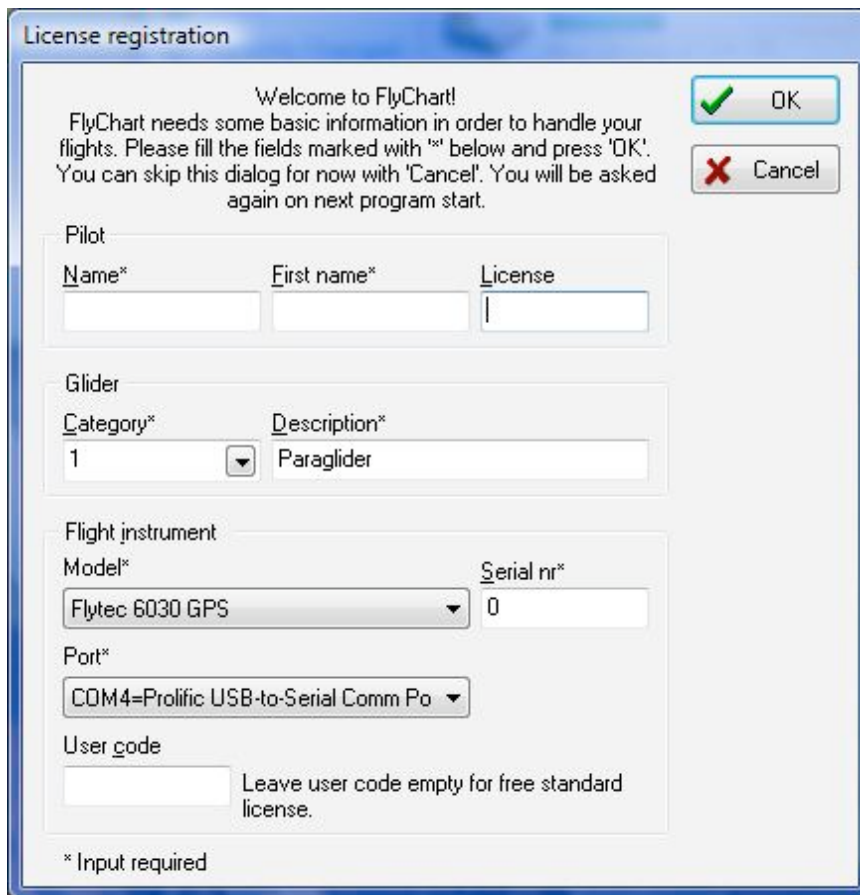
12. Successful driver installation. Click **Finish**



13. This screen confirms the FlyChart installation was successful. Select the **Open Readme file** button and click **Finish**.

Step 3 Register FlyChart

1. Connect the Instrument to the PC with the USB cable provided with your instrument.
2. Start FlyChart
3. With the first start of FlyChart a License registration screen will appear.
4. Please fill in the fields. Note: the *License* field next to your name is for your pilot's license (not software license). Select your instrument type in the *Model* field. In the *Serial Nr* field enter the serial number of your Instrument. The serial number can be found on the instrument start-up screen.



The image shows a 'License registration' dialog box with the following fields and options:

- Welcome to FlyChart!**
FlyChart needs some basic information in order to handle your flights. Please fill the fields marked with '*' below and press 'OK'. You can skip this dialog for now with 'Cancel'. You will be asked again on next program start.
- Pilot**
 - Name* (text input)
 - First name* (text input)
 - License (text input)
- Glider**
 - Category* (dropdown menu, value: 1)
 - Description* (text input, value: Paraglider)
- Flight instrument**
 - Model* (dropdown menu, value: Flytec 6030 GPS)
 - Serial nr* (text input, value: 0)
- Port*** (dropdown menu, value: COM4=Prolific USB-to-Serial Comm Po)
- User code** (text input) with a note: "Leave user code empty for free standard license."

* Input required

5. If you have purchased a professional license (included with 6020/6030) enter this number in the *User Code* field; otherwise leave this field blank and a standard license will be automatically installed when **OK** is selected in the next step.
6. Click **OK**
7. FlyChart is now ready to use.

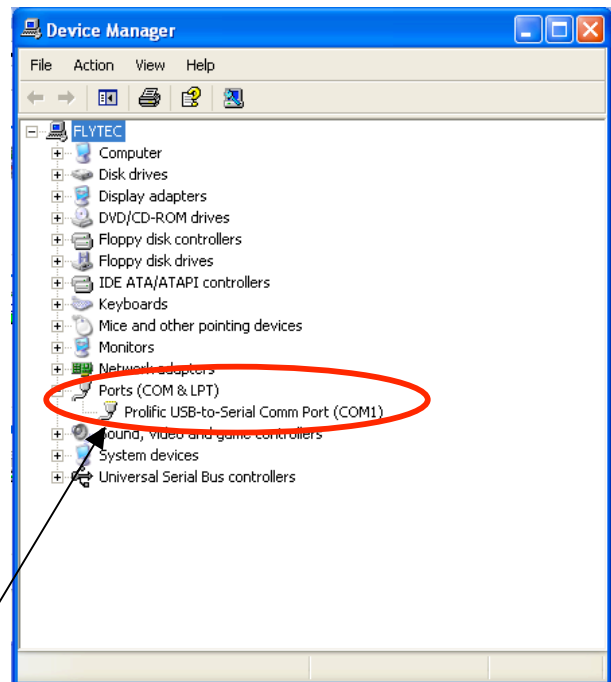
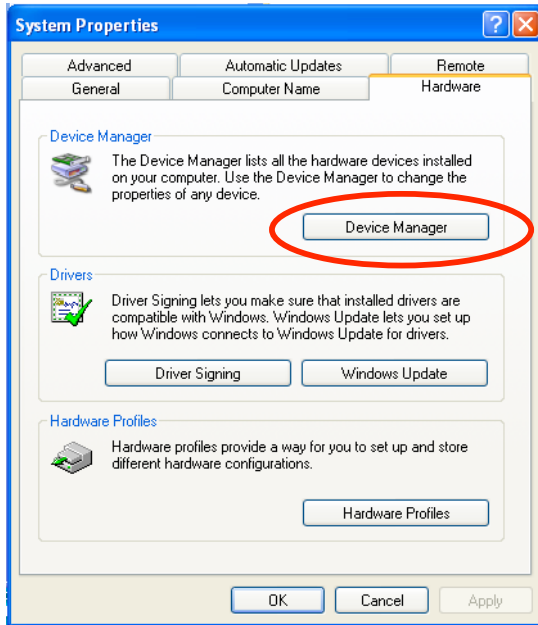
Troubleshooting Port Connection

If FlyChart does not list the Prolific USB to Serial adapter/driver it could be that another device is reserving it or using the available ports. Bluetooth devices can reserve several of the available COM ports. In this case, it is possible that the Prolific driver cannot find a free COM port and it tries to share a COM port with the other device. If this occurs it will be necessary to map the Prolific driver to a free port.

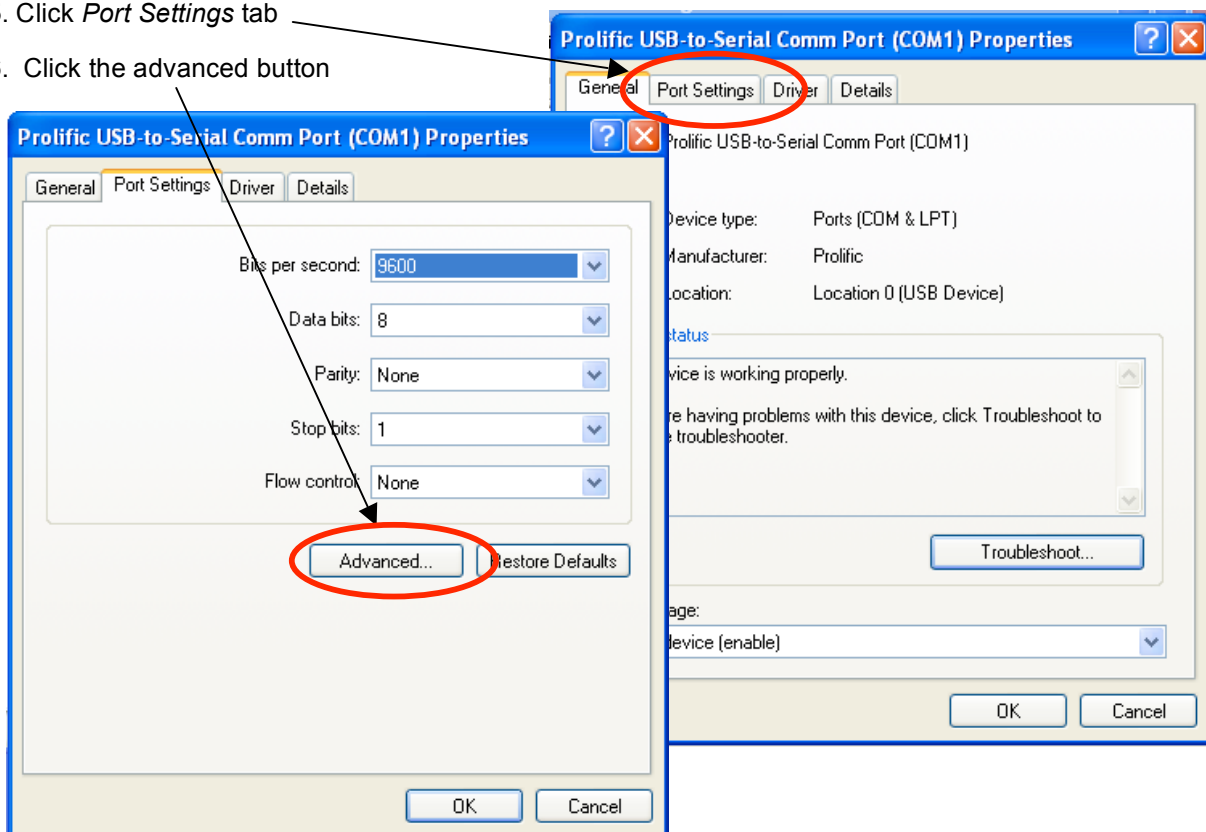
FlyChart Installation Guide



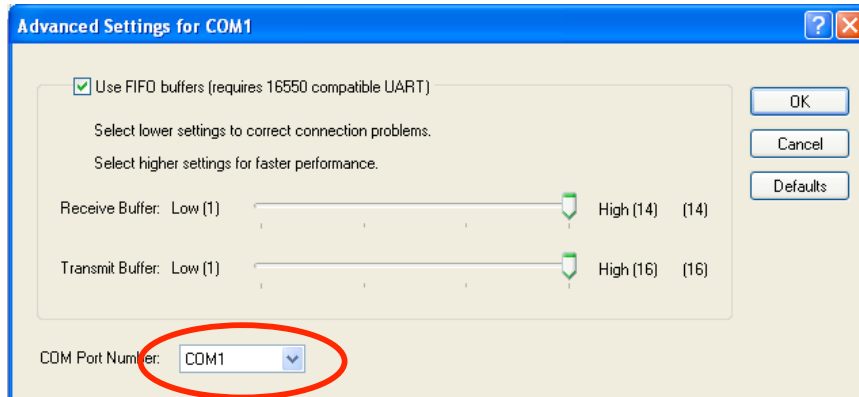
1. Connect the Flytec instrument to the PC with the supplied USB cable.
2. Open Windows *Control Panel* > *System* > *System Properties* > *Hardware* tab.
3. Click the *Device Manager* button.



3. Expand *Ports (COM & LPT)*. You should see a list with the available COM ports. One of them should be the Prolific USB Driver.
4. Right-click *Prolific USB-to Serial Comm Port* and select *Properties*
5. Click *Port Settings* tab
6. Click the advanced button



7. Click on the *COM Port Number* pull-down and select the lowest number COM port that is not in use. If a COM port that is marked as “In use” is selected conflicts with other programs are likely.



8. Click OK and return to your compatible PC software package or Flytec flasher utility. Be sure to select the COM port that you selected in step 7 as the port selection in program that you are using.